

State of Wyoming Corner Record

(In compliance with the CORNER PERPETUATION AND FILING ACT, Wyoming Statutes, 1977,
 Section 36~11~101, et seq., and the Rules and Regulations of the Board of Registration for Professional
 Engineers and Professional Land Surveyors)

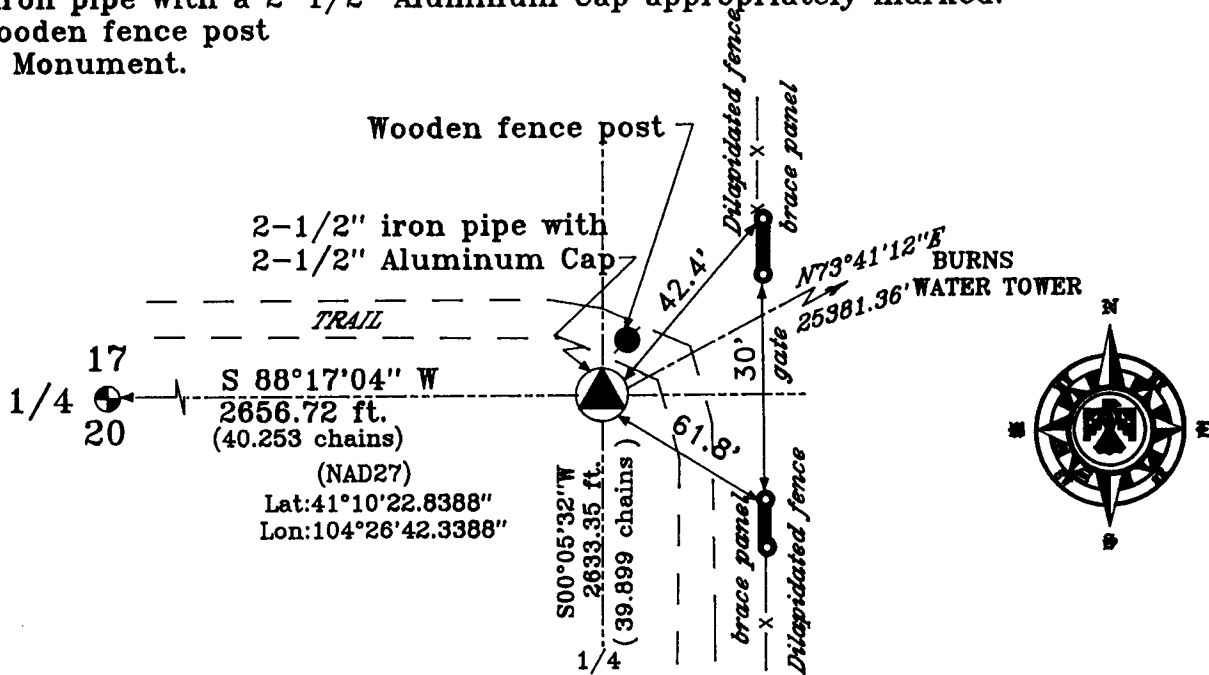
The reverse side of this form may be used if more space is needed.

The Record of the original survey and the citation of the source of the historical information (if the corner is lost or obliterated). The description of the corner monumentation evidence as found and/or the monument and it's accessories as established to perpetuate the location of this corner. A sketch of the relative location of this Monument, accessories, and reference points with the course and distance to adjacent corner (s) (if determined during this Survey). The Method and Rationale used for the reestablishment of lost and obliterated corner.

GLO Survey performed by Edwin James and Alfred M Rogers in A.D. 1871
 ...North between Section 20 and Section 21 (Variation 15.35'E) 40.00 chains set Granite
 stone 16X10X8 for quarter Section corner; at 80 chains set Granite stone 18X10X5 for
 Section Corner 16/17/20&21....

Corner was lost. Reestablished corner by double proportion, North from 1/4 found for
 Sections 5 & Section 4, and section corner 20, 21, 28 & 29. East & West using found
 Section corner for 15, 16, 21 & 22 and Section corner found on the Range line T.14N.
 R.63W. & T.14N. R.64W. for Sections 18, 19, 13 & 24. These were the only corners that
 could be found after several weeks of searching.

Set 2-1/2" iron pipe with a 2-1/2" Aluminum Cap appropriately marked.
 Set 4" dia wooden fence post
 as guard for Monument.



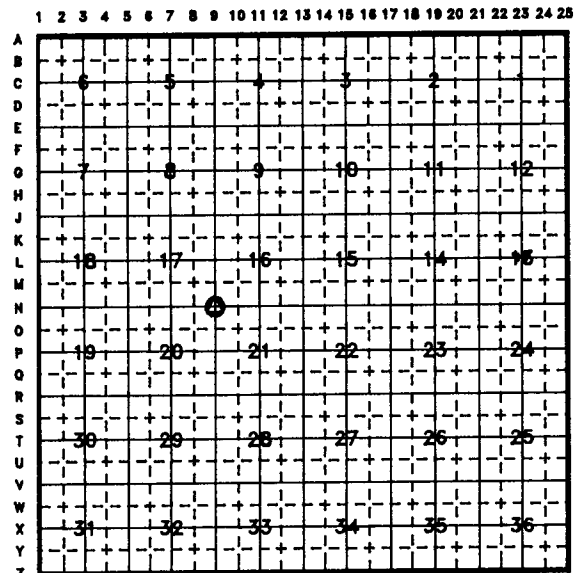
Date of Field Work: June 1999

Office Reference: _____

Cross Index Diagram

NAD27
 Latitude: 41°10'22.8388"
 Longitude: 104°26'42.3388"

Firm/Agency, Address
 Terrestrial Surveying & Mapping Co.
 "Your Friendly Neighborhood Surveyor"
 1127 Terry Ranch Road
 Cheyenne, Wyoming 82007
 Telephone Number: (307) 634-9360



This Corner Record was prepared by
 me or under my direction and
 supervision.

SEAL & SIGNATURE



Corner Name: 17-16 20-21 Section: _____ T.14 N. R.63 W. 6th P.M. Cross Index No. N~9